



VIDEO



PDF

OPERATION AND SAFETY INSTRUCTIONS FOR ON-TRUX ROLL-OFF SYSTEMS



**Roll-off To Be Operated by
Trained Personnel Only**

For safety and operation manual contact On-Trux by phone or email:

888.556.1167

tech@OnTrux.com

A copy of operating instructions are to remain in the vehicle at all times for review and reference. Should that manual be removed or misplaced, obtain a copy immediately from your office or at ontrux.com, or call or email On-Trux above.



WWW.ONTRUX.COM | 1 (888) 556-1167



WARNING

ROLL-OFF SYSTEM MUST BE OPERATED BY TRAINED PERSONNEL ONLY.
In this manual, we refer to several safety and operation procedures that do not relate to the On-Trux product. These helpful tips are in no way complete, and On-Trux shall not be liable for any damages of any kind regarding the information or procedures reported. This information is not a substitute for laws or other operations, and shall not restrict or alter any obligation to comply with federal, provincial or states law or local by-laws.

- Do not operate the On-Trux Roll-off System (ROS) before reading and understanding this manual. Refer to the owner's manual of the truck chassis the On-Trux ROS is built on for additional operation safety.
- Do not operate the On-Trux Roll-off System (ROS) while under the influence of drugs or alcohol.
- Do not overload the system or the truck. Refer to this manual and the truck manual for specifications.
- Do not operate the On-Trux Roll-off System (ROS) on an incline in any direction. Do not operate the On-Trux Roll-off System (ROS) where the truck or On-Trux body may be hit by other traffic.
- Do not operate the On-Trux Roll-off System (ROS) in an area where children, pedestrians or animals may be harmed.
- Do not operate the On-Trux Roll-off System (ROS) unless the truck and rear area of the truck are clear of debris or other items.

Training is mandatory for the safe and correct operation of the Roll-off System.

Do not use this system unless properly trained.

For additional training, please contact
On-Trux at 888.556.1167 or tech@ontrux.com
Or contact your authorized On-Trux Distributor

READ AND UNDERSTAND INSTRUCTIONS BEFORE OPERATING

Table of Contents

Cable to Body Hooking & Unhooking Safety Precautions	4
More Safety Precautions	5
Precautions while using the On-Trux Roll-off	6
ROS Loading Procedure	7
ROS Offload Procedure	11
Specifications	13



2564 Cedar Creek Rd. Building#1 | Ayr ON N0B 1E0 | 519-620-1086 | tech@ontrux.com

Cable to Body Hooking & Unhooking Safety Precautions



WARNING

NEVER GO BEHIND OR IN FRONT OF THE TRUCK WITHOUT INITIATING ALL OF THE FOLLOWING PRECAUTIONARY PROCEDURES

- 1) Set transmission in park or neutral
- 2) Apply emergency brake
- 3) Turn off PTO/Hydraulic pump switch
- 4) Ensure wireless remote is shut off (if equipped)
- 5) Turn off truck ignition
- 6) Always check to make sure your surroundings are safe prior to exiting the vehicle
- 7) Apply wheel chocks to both rear & front of rear wheels

More Safety Precautions

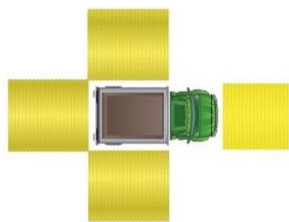
- Read, understand and follow all safety instructions and cautions listed in the manual for the truck ROS is mounted on.
- Ensure ROS rails are free from debris as stones, bolts, nuts and other items may become projectiles while the On-Trux body rolls over these areas.
- Do not operate the ROS when distracted by conversation, eating, texting, or any other distraction.
- It is safest to run the ROS from inside the truck cab so that you may observe the entire system and surroundings.
- Do not use any method or device to hold a control valve open which will prevent a spring-centered valve handle from automatically closing when released. Spring-centred valve handles are intended to stop their controlled actions when released.
- If you choose to operate the ROS from outside the truck cab, keep 5 feet back of the truck sides while the system is operating and stay clear of the front and back of the truck while loading & unloading truck bodies. Do not touch any of the components of the On-Trux ROS while the system is operating, or allow loose clothing to come in contact with moving parts. Failure to comply may cause injury or death.
- Leaks from the hydraulic system must be corrected immediately as hydraulic fluid is under extreme pressure. A pinhole in any part of the system may cause the fluid to travel at high pressure, potentially penetrating your skin causing serious injury or death. Further, hydraulic fluid can be poisonous to humans and spills may impact the environment.
- Wear appropriate Personal Protection Equipment (PPE) including gloves, safety glasses and safety footwear.
- Ensure that all loads on truck bodies are properly secured so they will not shift during loading, unloading or transport, or cause an axle to be overloaded.
- Always check for overhead wires/obstructions before raising the ROS. Making contact with electrical wires may cause injury or death.
- Do not overload the ROS or the Truck. Be cautious to stay within the ratings. Failure to comply with ratings may cause the system to fail, which may cause injury or death and would void the warranty.
- Do not smoke while running the On-Trux ROS, as fumes may cause a fire, explosion or death.
- Do not smoke while filling any fluids in the truck or On-Trux system, as an explosion or fire may occur causing injury or death.
- Do not walk or stand between the truck and On-Trux body when loading/unloading unless the emergency brake is activated, the On-Trux body is fully on the ground and the On-Trux body is not being loaded or unloaded. Failure to comply may cause injury or death.
- Never climb on the ROS or truck bodies, as unsecure footing may cause you to fall causing injury or death.
- Do not open, uncap or attempt to service the hydraulic system during operation, or immediately following operation when the oil may scald you, causing injury or death.
- **Never go between truck and body without the truck being in park or neutral, e-brake applied, PTO turned off, remote turned off, truck turned off & wheel chocks in place. Failure to comply may cause injury or death.**

Safety Precautions continued

- All defects, malfunctions, or suspect operation must be corrected immediately by trained individuals. All repairs should be corrected immediately by authorized personnel. Some problems may be, but are not limited to, the following: cracked welds, bulging metal, deformed metal, excessive oil leaks, electrical sparking or electrical shocks. Failure to make repairs may cause the system to fail, and may result in injury or death.
- Inspect each On-Trux body you are using each day for damage or repair issues.
- Inspect the truck and ROS daily for any defective components.
- Never drive with the On-Trux Roll-off system rails in the raised position, or with the On-Trux body unlocked.
- Never drive the vehicle with the hydraulic power take-Off (PTO) or clutch pump turned on.
- Do not allow riders on any of the equipment.
- Never allow anyone to work on or inspect components under a raised ROS without appropriate safety support for the ROS.
- Never allow the pressure in the hydraulic system to be adjusted above 2000 PSI (13,800 KPA)
- Never leave the On-Trux ROS in the raised position with the PTO or clutch pump off, as a hydraulic fluid spill may occur if a lever is inadvertently depressed.
- Do not lift bodies onto the On-Trux ROS that have not been built by On-Trux, as the locking mechanisms may not properly secure the body, the rails may not be spaced to accept the other body, or other misalignment may occur. Failure to comply may cause the body to shift or fall off of the truck causing injury or death.
- Never attempt to load a bin from an angle. The bin will not align properly with the rails, will not lock properly causing the bin to fall off the truck or the truck to roll, causing injury or death.
- Always check rear doors on body to make sure they are properly secured & latched.
- Training should be performed by On-Trux staff. Contact us at any time for additional training.

Precautions while Using the On-Trux Roll-off

- Ensure the unloading area is free & clear of people and debris before loading/unloading your cargo. That includes the length of the body/bin behind the truck, 15 feet on either side of the truck behind the hydraulic controls, and the length of the body/bin in front of the truck as well.
- Ensure the ground is firm & level before loading or unloading.
- Ensure the On-Trux body is loaded evenly and cargo enclosed or attached is secure.
- Never lower the hoist without the engine running and the clutch pump or PTO turned on; otherwise oil will overflow through the oil tank fill tube.
- If the vehicle is equipped with air ride suspension, always dump the air before engaging the PTO.



On-Trux recommends the winch cable end be stored on the winch hook at the rear with a 3 foot minimum loop as shown below. This will make it easier to hook up the next On-Trux body and avoid the need to climb on top of ROS to pull out the cable.



ROS Loading Procedure

Safety is the first concern when using the Roll-off System. Care needs to be taken to ensure there are no persons, debris, or other obstructions in the operation zone when loading. The operation zone is defined as the space in front of and behind the truck where the truck and On-Trux body will move to during operation.

Note: The truck will travel backwards towards the bin when loading.

- 1) Check to ensure overhead wires or other obstructions will not contact the system when lifted or deployed.
- 2) Check that ground is firm and level.
- 3) Ensure that no one is in the vicinity of the loading or unloading area. That includes the length of the body/bin to the back, 15 feet on either side of the truck behind the hydraulic controls, and in front of the truck for the length of the body/bin.
- 4) Back up the truck to within 1-2 feet (30-60cm) of the On-Trux body you are lifting, lining the truck up with the On-Trux body in a straight line. Failure to align the truck with the On-Trux body may cause the load to shift, be loaded onto the truck incorrectly and unsafely, and may cause permanent damage to the system.
- 5) For trucks with air ride suspension, always dump the air before engaging the clutch pump/PTO.
- 6) Turn on clutch pump/PTO.
- 7) For trucks with standard transmission – depress clutch, shift into neutral & engage PTO. Release clutch and PTO is ready. Engage the emergency brake.
- 8) For trucks with automatic transmissions with PTO that hot-shifts, put transmission in park and switch PTO on.
- 9) For trucks with automatic transmissions with PTO without hot shift, shift transmission into drive, then engage PTO switch.

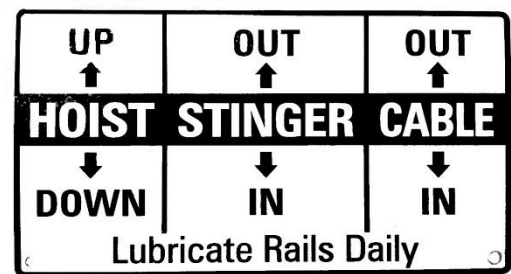
NOTE: IF YOU DO NOT HAVE A WIRELESS REMOTE PLEASE GO TO 9A) BELOW FOR INTERIOR CONTROL SET-UP.

9) Turn on the remote by depressing the green button. The LED will illuminate indicating the remote is “on”.

10) Observe remote and exterior control layout – see below. **Note: Always shut off red button on remote when not in use.**



Buttons on the remote activate as you look at the side truck from the driver’s side; the **Stinger Out** button is on the left and the **Stinger In** button is on the right. The **Cable Out** button is on the left and the **Cable In** button is on the right.



NOTE: Must hold lock button down to use any other function.

9a) Observe interior and exterior control layout for tandem/tri-axle models – see below.



ROS Loading Procedure Continued

11) Depress **Hoist Up** to end of stroke. Back up truck to the body so that it is centred and aligned with it. The truck should be approx. 1 –2 feet from body. Apply emergency brake & put transmission in park or neutral & disengage PTO. Attach cable to the body.

Note: Never go between truck and body without the truck being in park or neutral, e-brake applied, PTO turned off, remote turned off, truck turned off & wheel chocks in place.



Ensure the cable is well secured or the load may drop causing damage, injury or death

13) Depress **Stinger Out** until the stinger's roller almost touches the ground as shown in picture below. There should be no weight on the roller as the truck must roll on the ground surface.



Ensure stinger does not sit on top of On-Trux Body rollers.



14) Apply brake, place transmission in neutral. Use brake to apply slight drag and depress **(Reeve)Cable In**, allowing truck to roll under the body. Use steering to correct any misalignment between chassis and body.

12) With cable attached drive the truck slowly forward gently until winch cable is tight & re-engage PTO.



Do not shock load the cable, doing so will shorten the life expectancy of cable and possibly other parts.



ROS Loading Procedure Continued

15) When the body is on the stinger approx. 2 feet (60cm), depress **Hoist Down** while depressing **(Reeve)Cable In** until the angle of the ROS matches the angle of the On-Trux body. Continue to depress **(Reeve)Cable In** until the On-Trux body is fully on the ROS. Engage brake fully and apply emergency brake as the On-Trux body leaves the ground



Stop depressing **(Reeve)Cable In** as soon as the On-Trux body reaches the front stops. Failure to do so will result in pre-mature cable failure.



Salts, beaver-tail decks and some other bodies will interfere with the stinger during loading. If the stinger contacts the body, damage to the stinger or body is probable.

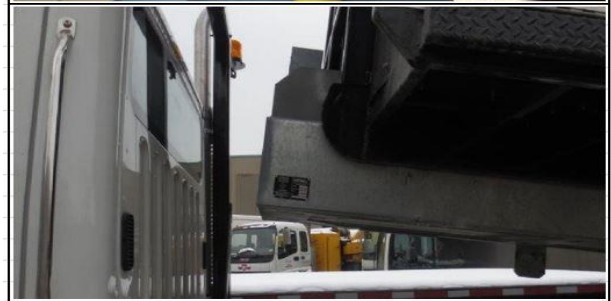


If you pull a shorter body onto your roll-off than designed for, there may be interference with the stinger and it may have to be retracted prior to the body reaching the lock point.



Never drive with the clutch pump or PTO turned "ON" as it will result in permanent damage to the hydraulic system.

16) When the On-Trux body is almost fully pulled on, the front pin locks will enter through the ROS front plate. Ensure the lock is engaged in the locking brace such that the On-Trux body is stopped from rolling back.



17) Depress **Stinger In** until the stinger is fully retracted. Depress **Hoist Down** until the ROS is docked on the frame of the truck. The rear section of the On-Trux body has been automatically locked by rolling over a locking mechanism. Turn off the clutch pump and disengage the PTO. (If you have a remote) Turn off remote by depressing red button. The LED on the remote will go out. For trucks with air ride suspension, always air back up after turning off the clutch pump/PTO.



Before traveling check to make sure body lock is in lock position.



ROS Offload Procedure

Safety is the first concern when using the Roll-off System. Care needs to be taken to ensure there are no persons, debris, or other obstructions in the operation zone when offloading. The operation zone is defined as the space in front of and behind the truck where the truck and On-Trux body will move to during operation. Note: The truck will travel forwards away from the bin when offloading.

- 1) Check to ensure overhead wires or other obstructions will not contact the system when lifted or deployed.
- 2) Ensure the ground is firm and level.
- 3) Ensure no one is in the vicinity of the loading unloading area.
- 4) For trucks with air ride suspension, always dump the air before engaging the clutch pump/PTO.
- 5) Turn on clutch pump/PTO.
- 6) For trucks with standard transmission – Engage emergency brake, depress clutch, shift into neutral & engage PTO. Release clutch and PTO is ready.
- 7) For trucks with automatic transmissions with PTO that hot-shifts, put transmission in park and switch PTO on.
- 8) For trucks with automatic transmissions with PTO without hot shift, shift transmission into drive, then engage PTO switch.

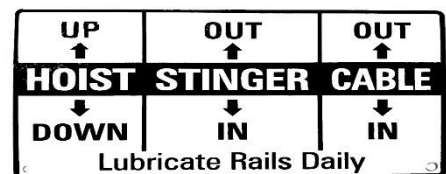
NOTE: IF YOU DO NOT HAVE A WIRELESS REMOTE PLEASE GO TO 9A) BELOW FOR INTERIOR CONTROL SET-UP.

9) Turn on remote by depressing green button. The LED will illuminate indicating the remote is “on”.

9a) Observe interior and exterior control layout – see below.

10) Observe remote and exterior control layout – see below: **Note: Always shut off red button on remote when not in use.**

Buttons on the remote activate as you look at the side truck from the driver’s side; the **Stinger Out** button is on the left and the **Stinger In** button is on the right. The **Cable Out** button is on the left and the **Cable In** button is on the right. **NOTE: Must hold lock button down to use any other function.**



ROS Offload Procedure continued

11) Move On-Trux body lock to unlock position (If you have this model)



12) Depress **Stinger Out** until the stinger is fully extended



13) Depress **Hoist Up** until the On-Trux body is at approximately 22 degrees, but do not raise the ROS beyond the height of the truck cab.



14) Depress (**Reeve**)**Cable Out** until the On-Trux body comes into contact with the ground. At this point, place the truck in neutral so the truck may roll forward as the bin is deployed. Depress (**Reeve**)**Cable Out** until the front of the On-Trux body is approximately 1 foot from the end of the main frame of the ROS.



15) Depress **Hoist Up** until the stinger's roller almost touches the ground. This will allow the On-Trux body to rest gently on the ground. Depress (**Reeve**)**Cable Out** until the On-Trux body is rested on the ground. Engage the emergency brake so the truck may no longer roll.



ROS Offload Procedure continued

Depress **Stinger In** until the stinger is fully retracted into the main ROS frame. Back up the truck 1-2 feet to create some slack in the winch cable. **Never go between truck and body without the truck being in park or neutral, e-brake applied, PTO turned off, remote turned off, truck turned off & wheel chocks in place.**



16) Safely exit the vehicle and remove cable from body and attach to holding hook. Leave slack in cable as shown below in both pics as this is the required amount to re-hook next body.



17) Re-engage PTO, Lower ROS (Hoist Down) until tightly against frame, Shut off hydraulic pump (PTO). For trucks with air ride suspension, always air back up after turning off the clutch pump/PTO.

Specifications

The On-Trux Roll-off System is designed to carry bodies with **evenly distributed** weight.

The Above Frame System MODEL# OTSAF has an 18,000 lbs or 8,100 KG capacity.

The Medium Duty System MODEL# OTS has a 24,000 lbs or 10,900 KG capacity.

The Tandem System MODEL# OTT has a 65,000 lbs or 29,500 KG capacity.

The Tri-Axle System MODEL# OTTR has a 75,000 lbs or 34,000 KG capacity.

NOTE: If you have a custom unit your capacity could be different than one of the above.

Exceeding this weight would be considered operating the system beyond the capacity of the product, voiding any warranty.



NEVER GO BEHIND OR IN FRONT OF THE TRUCK WITHOUT THE TRUCK BEING IN PARK OR NEUTRAL, E-BRAKE APPLIED, PTO TURNED OFF, REMOTE TURNED OFF, TRUCK TURNED OFF & WHEEL CHOCKS IN PLACE. FAILURE TO COMPLY MAY CAUSE INJURY OR DEATH



NEVER DRIVE WITH THE CLUTCH PUMP OR PTO TURNED "ON" AS IT WILL RESULT IN PERMANENT DAMAGE TO THE HYDRAULIC SYSTEM.



ROLL-OFF SYSTEM MAY ONLY BE OPERATED BY TRAINED PERSONNEL ONLY

For training, please contact On-Trux
at 888.556.1167 or tech@ontrux.com

Or

Contact your authorized On-Trux Distributor